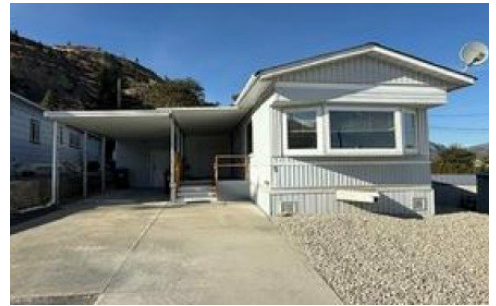


5 6822 Leighton Crescent
South Okanagan, BC

RE/MAX
Orchard Country

Powered by homes.kelownacapnews.com

MLS# 10372555



\$75,000

2 Bedrooms | 1 Bathroom | 775 Sqft

PRICED BELOW ASSESSED VALUE! This 2 bed, 1 bath mobile home is located in Tumbleweed Mobile Home Park and located close to Oliver downtown, parks, shoppings, medical centers, amenities yet a short drive to Penticton, Osoyoos, and the US Border. This mobile offers an OPEN CONCEPT living/dining/kitchen space with tons of natural light along with the fresh paint and new carpeting. There's a 4 piece bathroom, SPACIOUS laundry space, and a den. Outside, there is a carport and covered deck plus LOW MAINTENANCE yard space. Ideal for snowbirds as a LOCK-N-GO! 55+. No rentals. 1 small pet with park approval. By appointment only. Measurements approximate only - buyer to verify if important.



Scarlett Barber PREC

Phone: (778) 215-0445

RE/MAX Orchard Country

Office: (250) 494-8881

For full listing details, please scan:

